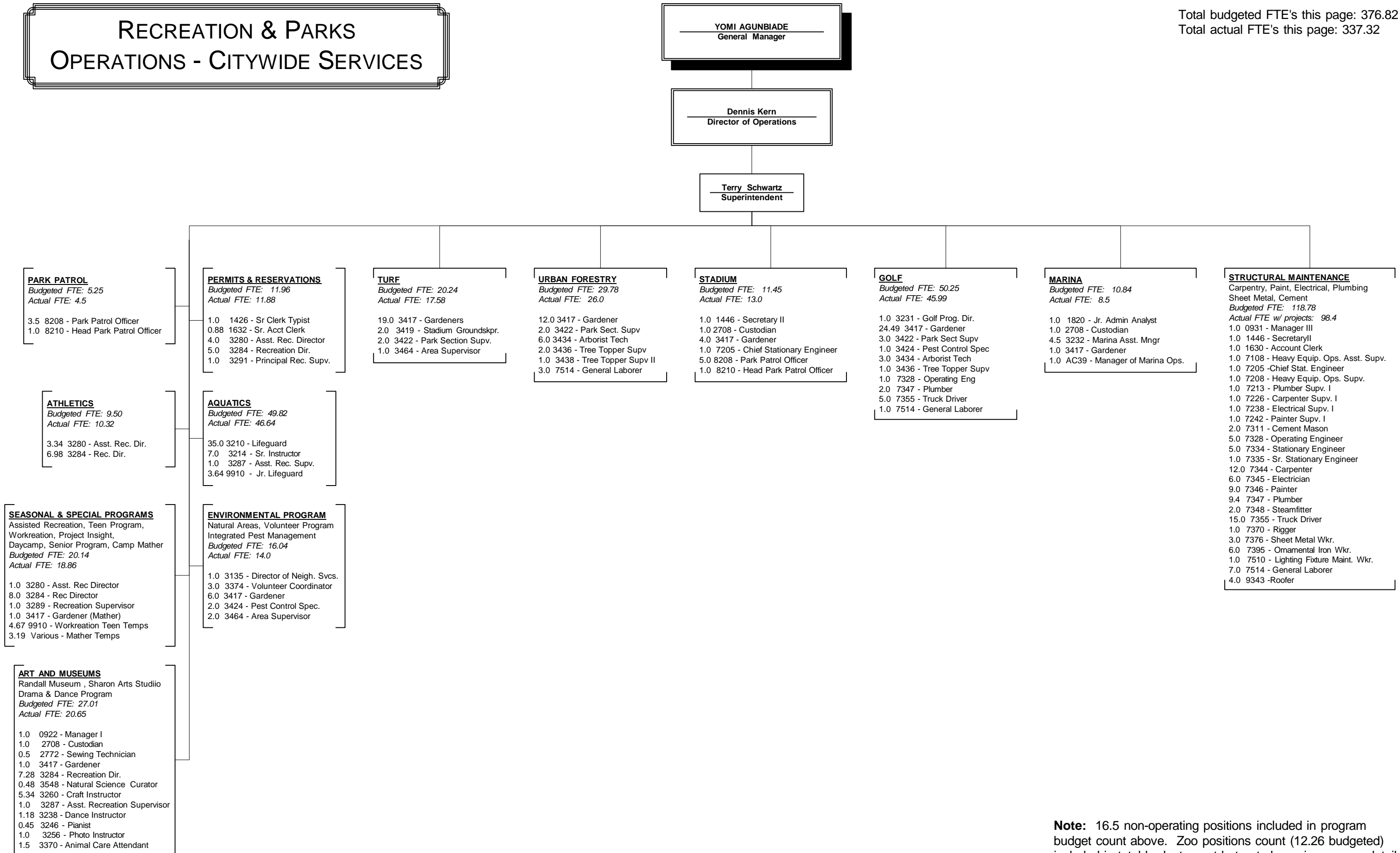


RECREATION & PARKS OPERATIONS - CITYWIDE SERVICES

Total budgeted FTE's this page: 376.82
Total actual FTE's this page: 337.32



Note: 16.5 non-operating positions included in program budget count above. Zoo positions count (12.26 budgeted) included in total budget count but not shown in program detail above (management agreement). Actual position count does not include extended leaves, long-term worker's compensation leaves, or temporary, seasonal, and as-needed employees.